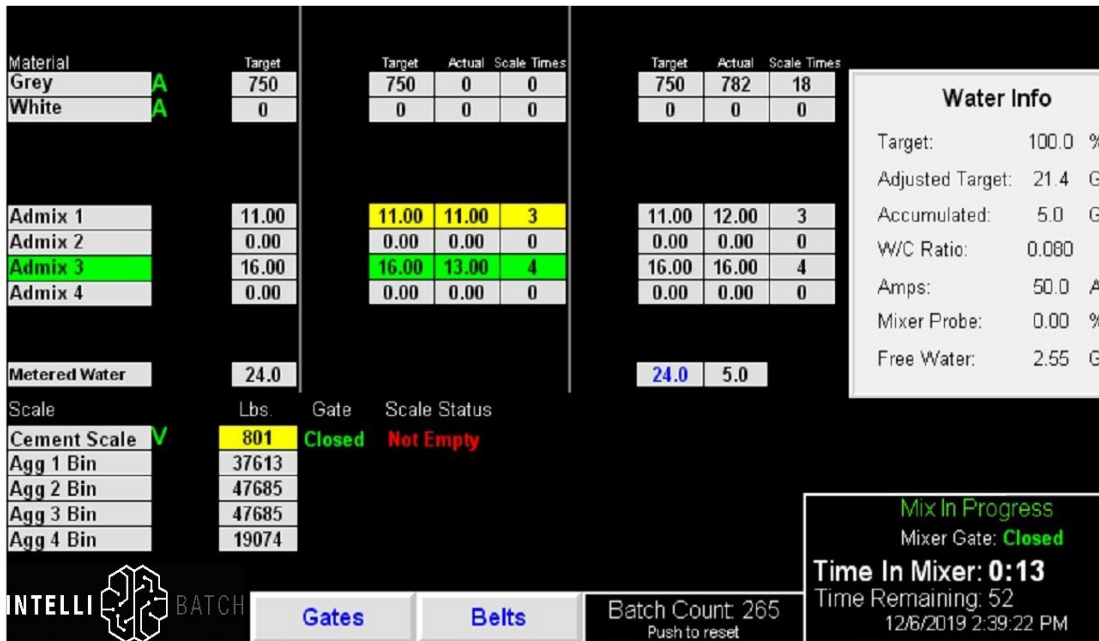


AN ECONOMICAL SOLUTION FOR SINGLE-MIXER PLANTS



EGAN'S INTELLIBATCH™ TEAM offers engineered control and data processing systems for the operation of concrete plants. With our sweeping range of features geared toward quality and control, IntelliBatch covers all the bases for your new or existing concrete plant.

EGAN COMPANY is a system integrator and specialty contractor that delivers attention, commitment, and craftsmanship to every project. IntelliBatch™ products were developed in-house as a result of experience working within hundreds of concrete facilities.

SAFETY is a significant component of all Egan Company projects, and we invest resources into keeping it that way. In fact, we have been recognized as one of America's Safest Companies.

Run your single-mixer plant more accurately, efficiently, and effectively with *IntelliBatch™ Basic*. This economical solution has all of the essential features to produce quality concrete and meets plant certification and regulatory requirements.

Provides all your essential batching functionality in a cost effective package:

- Intuitive touchscreen interface with easy to understand operations
- Up to 50 mix designs
- Ticket logging and printing
- Integrated scales
- Integrated moisture compensation
- Non-proprietary industrial hardware
- Printing/reporting options